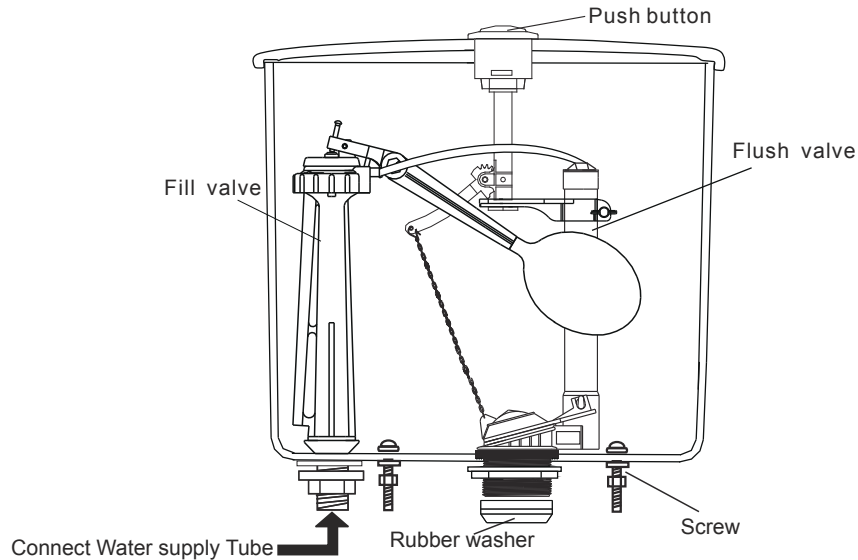


Installation Manual of Tank Fittings

Please give the manual to the end user. Please read the manual thoroughly before using it.

General Drawing

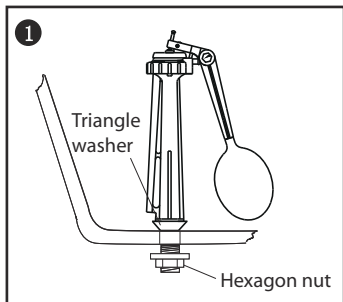


WARNING:

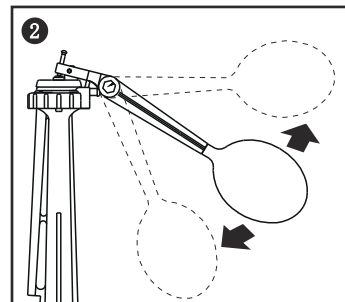
Do not use an in-tank type bowl cleaner in your toilet. In-tank cleaners containing chlorine (calcium hypochlorite) can seriously damage fittings in the tank. We shall not be responsible for any tank fitting damage caused by the use of cleaners containing chlorine (calcium hypochlorite). We will not be liable for damages due to improper handling or installation, abuse, or alteration of the product. We disclaims any responsibility for incidental or consequential damages.

The Installation Manual

1、The Installation of Fill valve

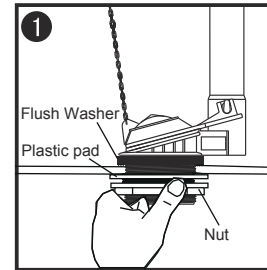


1. Spin the hexagon nut open, take off the plastic pad and insert the fill valve into the water-in hole of the tank, make sure the triangle washer is at the position as the drawing show.

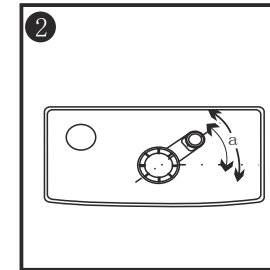


2. Adjust water level by loosening thumbscrew located at the base of the float rod. Position adjustable float rod to desired height, then tighten thumbscrew. Turn on water and check for leaks.

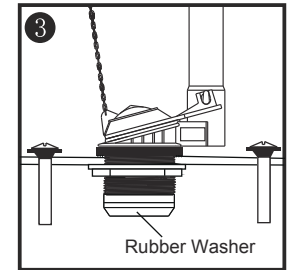
2、The installation of Flush valve



Take the nut & plastic flush washer, put the flush valve center over the flush open at the bottom tank. Make sure the triangle gasket is between the tank and the flush valve.

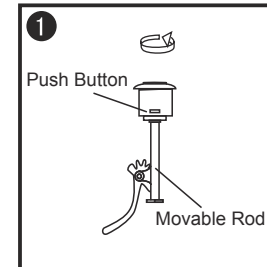


Adjust the angle of the flush valve, make sure the flapper is easy to open, and the chain is not blocked.

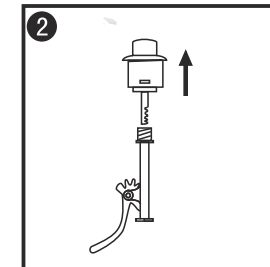


Put the tank on the toilet bowl, make sure the tank rubber washer exactly center over the flush open. Use the tank bolts to install the tank and the toilet bowl.

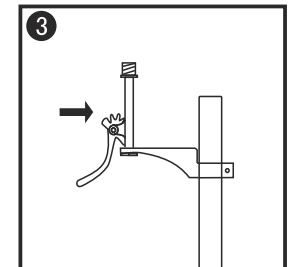
3、The installation of Push button



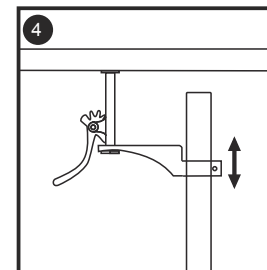
Screw the push button away from the movable rod counter clockwise.



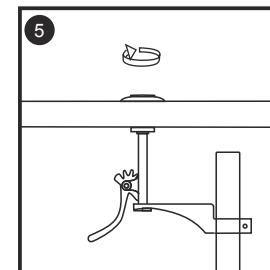
Take out the push button upward.



Insert the moveable rod into the connector rod.



Move the connector up and down and rotate the connector, make sure the movable rod center over the push button hole and the height is suitable.



Put the push button into the upper tank hole, screw the movable rod. When the gap between the push button and tank is too big, adjust again according to the drawing.

Attention: If the product is different from the drawing, please take the product as correct.